

Appendix Table 1a. Tetrachoric Correlations and Factor Analysis of Social Fears in the Total Sample¹

	SO1a	SO1b	SO1c	SO1d	SO1e	SO1f	SO1g	SO1h	SO1i	SO1j	SO1k	SO1l	SO1m	SO1n
Meeting new people (SO1a)	1.00
Talking to people in authority (SO1b)	0.94*	1.00
Speaking up in meeting/class (SO1c)	0.94*	0.93*	1.00
Going to parties (SO1d)	0.96*	0.88*	0.90*	1.00
Public speaking/performance (SO1e)	0.93*	0.94*	0.98*	0.90*	1.00
Important exam/interview (SO1f)	0.91*	0.91*	0.93*	0.85*	0.93*	1.00
Working while being watched (SO1g)	0.90*	0.89*	0.90*	0.84*	0.90*	0.92*	1.00
Entering an occupied room (SO1h)	0.93*	0.88*	0.91*	0.89*	0.90*	0.87*	0.89*	1.00
Talking with strangers (SO1i)	0.96*	0.90*	0.91*	0.92*	0.91*	0.88*	0.85*	0.90*	1.00
Expressing disagreement (SO1j)	0.91*	0.89*	0.92*	0.86*	0.90*	0.87*	0.85*	0.86*	0.91*	1.00
Writing/eating/drinking while being watched (SO1k)	0.87*	0.82*	0.86*	0.83*	0.86*	0.85*	0.86*	0.87*	0.84*	0.81*	1.00	.	.	.
Using public bathroom (SO1l)	0.79*	0.74*	0.82*	0.73*	0.81*	0.77*	0.75*	0.77*	0.77*	0.74*	0.76*	1.00	.	.
Dating situation (SO1m)	0.92*	0.87*	0.89*	0.89*	0.90*	0.86*	0.83*	0.86*	0.88*	0.83*	0.80*	0.74*	1.00	.
Other social/performance situation (SO1n)	0.93*	0.89*	0.93*	0.89*	0.94*	0.89*	0.85*	0.89*	0.90*	0.88*	0.84*	0.77*	0.89*	1.00
Factor 1 loading ²	0.98	0.95	0.98	0.94	0.98	0.94	0.93	0.94	0.95	0.93	0.89	0.82	0.92	0.95

*Significant at the .05 level, two-sided test.

¹Estimated in the Part I sample (n = 9282).

²Values are loadings on the first unrotated factor. Eigenvalues for the first and second unrotated factors are 12.263 and 0.193, respectively.

Appendix Table 1b. Latent Class Analysis¹ of Social Fears Among Respondents with Lifetime DSM-IV Social Phobia (n = 1143)

	Class 1	Class 2	Class 3	Class 4
Meeting new people	.13	.93	.93	.99
Talking to people in authority	.36	.54	.87	.94
Speaking up in meeting/class	.74	.69	.93	.99
Going to parties	.70	.81	.68	.98
Public speaking/performance	.86	.75	.95	.95
Important exam/interview	.38	.28	.88	.98
Working while being watched	.28	.24	.75	.96
Entering an occupied room	.15	.49	.69	.97
Talking with strangers	.12	.70	.73	.97
Expressing disagreement	.25	.51	.59	.98
Writing/eating/drinking while being watched	.99	.25	.47	.83
Using public bathroom	.14	.17	.24	.57
Dating situation	.22	.56	.61	.93
Class proportion	17.1	23.9	36.0	23.0
Average (mean) number of fears	5.2	6.9	9.3	12.0

¹Values represent the conditional probability of each fear in each of the four latent classes.

Appendix Table 2a. Percentage of Avoidance by Four Mutually-Exclusive SO Subgroups¹ and total lifetime SO sample

	% with avoidance		
	%	(se)	χ^2_3 (p-value)
1-4 fears	67.5	(4.8)	26.7 (< 0.001)
5-7 fears	74.8	(3.2)	
8-10 fears	79.3	(2.6)	
11+ fears	88.1	(1.9)	
Total lifetime SO	80.7	(1.4)	

¹Subgroups represent respondents with lifetime social phobia who endorsed different numbers of social/performance fears in the SO1 series. All disorders were diagnosed without observing hierarchical exclusion criteria.

Appendix Table 2b. Age of Onset¹ of First Fear and First Avoidance for Social Phobia and Four Mutually Exclusive Social Phobia Subgroups

	All Social Phobia			Social Phobia											
	Median	Mean	(se)	with 1-4 fears			with 5-7 fears			with 8-10 fears			with 11+ fears		
				Median	Mean	(se)	Median	Mean	(se)	Median	Mean	(se)	Median	Mean	(se)
First Fear	12	11.9	(0.3)	13	15.5	(0.9)	12	12.0	(0.5)	12	11.9	(0.4)	10	11.0	(0.4)
First Avoidance	13	13.9	(0.3)	14	16.8	(0.6)	14	14.5	(0.5)	13	14.0	(0.5)	12	13.0	(0.4)
(n)	(921)			(86)			(161)			(277)			(397)		

¹Estimated in the subsample reporting a history of avoidance of social situations. Values represent age (in years) when social fear and social avoidance first began.

Appendix Table 3a. Lifetime Comorbidity¹ (%) of Social Phobia and Four Mutually Exclusive Social Phobia Subgroups with Other DSM-IV Disorders

	All Social Phobia		Social Phobia				
	% (se)		with 1-4 fears % (se)	with 5-7 fears % (se)	with 8-10 fears % (se)	with 11+ fears % (se)	
Anxiety disorder							
Panic disorder	15.2 (1.2)		8.6 (2.9)	10.4 (2.0)	11.7 (1.7)	21.9 (2.5)	
Agoraphobia without panic	6.8 (1.0)		0.5 (0.5)	3.0 (1.4)	4.6 (0.9)	11.9 (1.9)	
Specific phobia	36.5 (1.8)		23.7 (4.5)	29.7 (3.1)	34.6 (3.1)	44.7 (3.1)	
Generalized anxiety disorder	24.1 (1.3)		17.3 (3.6)	20.7 (2.3)	18.3 (2.4)	32.1 (2.8)	
Post-traumatic stress disorder ²	19.0 (1.1)		10.7 (2.6)	14.6 (2.7)	14.5 (2.1)	26.9 (2.0)	
Separation anxiety disorder ²	24.8 (1.5)		6.4 (2.2)	20.0 (3.4)	23.4 (3.2)	33.7 (1.6)	
Any anxiety disorder ²	63.9 (1.8)		43.6 (6.0)	56.0 (3.1)	61.6 (2.5)	75.2 (2.9)	
Mood disorder							
Major depressive disorder	47.2 (1.7)		34.8 (4.6)	34.8 (3.6)	45.9 (2.8)	57.2 (2.9)	
Dysthymia	14.8 (0.9)		9.3 (2.4)	7.9 (1.9)	12.5 (1.9)	21.3 (1.8)	
Bipolar disorder (broad)	13.8 (1.1)		8.5 (3.0)	9.6 (2.5)	10.9 (1.9)	19.6 (2.2)	
Any mood disorder	51.8 (1.8)		38.8 (5.1)	38.8 (3.9)	49.8 (2.9)	62.8 (3.2)	
Impulse-control disorder							
Oppositional-defiant disorder ³	22.5 (2.6)		6.2 (3.3)	16.2 (3.4)	26.9 (3.9)	25.1 (2.9)	
Conduct disorder ³	18.7 (1.9)		8.4 (4.0)	14.6 (3.7)	21.8 (3.7)	20.3 (3.0)	
Attention-deficit/hyperactivity disorder ³	21.4 (2.1)		6.2 (3.5)	12.6 (3.0)	20.4 (4.3)	29.3 (4.0)	
Intermittent explosive disorder	19.8 (1.4)		18.1 (4.9)	14.3 (2.8)	17.8 (2.5)	24.2 (2.2)	
Any impulse-control disorder ³	49.8 (2.8)		28.0 (6.2)	39.9 (4.4)	48.2 (4.7)	59.8 (3.6)	
Substance use disorder							
Alcohol abuse or dependence ²	26.2 (1.5)		18.2 (4.7)	29.2 (3.9)	27.9 (2.4)	26.0 (2.4)	
Drug abuse or dependence ²	18.5 (1.4)		11.9 (3.5)	18.4 (3.1)	21.0 (2.7)	18.7 (2.1)	
Any substance use disorder ²	29.0 (1.6)		20.5 (4.5)	29.4 (3.9)	31.0 (2.5)	29.7 (2.7)	
Any disorder ²	81.6 (1.5)		62.9 (5.4)	75.2 (3.9)	81.5 (2.3)	90.2 (1.8)	
No comorbid disorder ²	18.4 (1.5)		37.1 (5.4)	24.8 (3.9)	18.5 (2.3)	9.8 (1.8)	
Exactly 1 comorbid disorder ²	16.0 (1.2)		19.4 (4.0)	17.3 (3.2)	19.6 (1.9)	11.5 (1.8)	
Exactly 2 comorbid disorders ²	15.3 (1.1)		21.9 (4.5)	13.6 (3.1)	16.6 (2.3)	13.1 (2.1)	
3 or more comorbid disorders ²	50.3 (1.9)		21.6 (3.8)	44.3 (4.5)	45.3 (3.0)	65.6 (3.3)	
	(n)		(1143)	(118)	(213)	(354)	(458)

¹All disorders were defined using DSM-IV criteria without observing hierarchical exclusion rules.

²Assessed in the Part II sample (n = 5692).

³Restricted to Part II respondents ages 18-44 (n = 3197).

Appendix Table 4a. Role Impairment in Pure¹ 12-month Social Phobia and Four Mutually Exclusive Social Phobia Subgroups

	Pure 12-month Social Phobia		Pure 12-month Social Phobia					χ^2_{3}
	% (se)		with 1-4 fears	with 5-7 fears	with 8-10 fears	with 11+ fears		
	% (se)	% (se)	% (se)	% (se)	% (se)	% (se)	% (se)	
I. Severe Impairment ²								
Home	2.0 (1.3)	0.0 (0.0)	0.0 (0.0)	5.5 (3.3)	0.0 (0.0)			--
Work	6.2 (1.7)	6.8 (4.7)	6.5 (3.7)	6.9 (3.1)	4.6 (3.6)			0.2
Relationships	11.8 (2.1)	6.9 (4.7)	2.1 (2.0)	15.4 (5.0)	17.7 (6.0)			6.1
Social life	13.8 (2.4)	1.8 (1.8)	12.2 (7.7)	11.9 (3.1)	25.3 (6.1)			9.5*
Any area	21.5 (2.5)	8.6 (4.9)	20.8 (8.2)	24.7 (5.1)	25.3 (6.1)			3.5
II. Any Impairment ³								
Home	45.5 (3.5)	43.3 (10.7)	51.8 (7.8)	40.8 (6.5)	48.6 (7.8)			1.4
Work	57.9 (3.5)	40.7 (10.6)	67.5 (9.2)	57.2 (7.1)	61.6 (7.2)			3.7
Relationships	71.0 (4.0)	41.0 (12.1)	73.3 (9.0)	75.4 (3.8)	81.1 (5.5)			12.9*
Social life	82.4 (3.7)	53.9 (10.2)	86.9 (4.3)	85.7 (4.4)	91.3 (4.0)			21.1*
Any area	89.9 (2.3)	66.9 (9.1)	95.5 (2.8)	92.0 (3.3)	96.4 (2.6)			22.8*
(n)	(197)	(30)	(43)	(72)	(52)			

*Significant difference between the four mutually exclusive social phobia subgroups at the .05 level.

¹Pure cases were defined as respondents with 12-month social phobia who did not qualify for any other DSM-IV disorder in the past 12 months.

²Values represent the proportions of respondents reporting severe or very severe impairment (score of 7-10) in each of the four Sheehan Disability Scale domains of functioning.

³Values represent the proportions of respondents reporting mild, moderate, severe, or very severe impairment (score of 1-10) in each of the four Sheehan Disability Scale domains of functioning.

Appendix Table 4b. Role Impairment in Comorbid¹ 12-month Social Phobia and Four Mutually Exclusive Social Phobia Subgroups

	Comorbid 12-month Social Phobia		Comorbid 12-month Social Phobia								χ^2_3
	%	(se)	with 1-4 fears	with 5-7 fears	with 8-10 fears	with 11+ fears	%	(se)	%	(se)	
I. Severe Impairment ²											
Home	14.4	(1.6)	16.6	(7.2)	4.2	(1.5)	12.4	(2.7)	18.0	(2.2)	18.9*
Work	19.1	(2.0)	19.4	(6.5)	16.4	(4.4)	13.8	(3.2)	22.8	(2.4)	4.6
Relationships	26.8	(2.1)	11.2	(6.2)	24.1	(6.1)	28.3	(4.9)	28.7	(3.3)	3.6
Social life	34.6	(1.8)	13.7	(6.7)	27.7	(5.2)	32.1	(4.8)	40.8	(3.6)	9.5*
Any area	42.3	(2.1)	24.6	(7.5)	36.8	(5.8)	42.5	(4.6)	46.1	(4.0)	6.4
II. Any Impairment ³											
Home	62.5	(2.4)	77.7	(8.6)	53.7	(5.9)	55.3	(4.4)	67.0	(3.1)	5.9
Work	75.5	(2.2)	75.3	(9.1)	72.9	(6.1)	73.1	(4.1)	77.6	(2.8)	1.1
Relationships	84.3	(2.0)	70.3	(9.2)	84.0	(5.0)	78.5	(4.5)	89.6	(2.1)	14.3*
Social life	87.6	(1.9)	73.5	(8.0)	85.4	(4.2)	83.6	(4.2)	92.4	(1.6)	16.5*
Any area	93.6	(1.5)	92.3	(3.6)	93.0	(3.0)	89.2	(3.4)	96.6	(1.3)	6.6
(n)	(482)		(29)		(75)		(135)		(243)		

*Significant difference between the four mutually exclusive social phobia subgroups at the .05 level.

¹Comorbid cases were defined as respondents with 12-month social phobia who met criteria for at least one other DSM-IV disorder in the past 12 months.

²Values represent the proportions of respondents reporting severe or very severe impairment (score of 7-10) in each of the four Sheehan Disability Scale domains of functioning.

³Values represent the proportions of respondents reporting mild, moderate, severe, or very severe impairment (score of 1-10) in each of the four Sheehan Disability Scale domains of functioning.

Appendix Table 5a. Socio-Demographic Distributions of Lifetime Social Phobia and Four Mutually Exclusive Social Phobia Subgroups

	All Lifetime Social Phobia		Lifetime Social Phobia							
	%	(se)	with 1-4 fears	with 5-7 fears	with 8-10 fears	with 11+ fears				
	%	(se)	%	(se)	%	(se)	%	(se)		
Age										
18-29	25.7	(1.3)	22.9	(4.9)	27.3	(3.8)	24.4	(2.7)	26.8	(2.7)
30-44	35.5	(1.8)	21.7	(4.4)	35.8	(3.5)	38.4	(3.2)	37.0	(2.5)
45-59	27.0	(1.3)	32.8	(6.0)	21.8	(3.2)	25.4	(2.5)	28.8	(2.3)
60+	11.8	(1.0)	22.6	(4.3)	15.0	(2.9)	11.8	(1.6)	7.4	(1.6)
Sex										
Female	56.2	(1.7)	41.8	(4.7)	50.7	(3.3)	49.6	(3.0)	67.8	(2.4)
Male	43.8	(1.7)	58.2	(4.7)	49.3	(3.3)	50.4	(3.0)	32.2	(2.4)
Race-ethnicity										
Hispanic	8.3	(1.6)	8.0	(2.9)	6.0	(2.2)	7.8	(2.3)	9.7	(1.9)
Non-Hispanic Black	11.0	(1.3)	10.5	(2.2)	12.2	(2.7)	7.8	(1.4)	13.0	(1.7)
Other	5.2	(0.8)	6.9	(3.0)	4.4	(1.4)	5.0	(0.9)	5.3	(1.2)
Non-Hispanic White	75.5	(2.3)	74.5	(3.8)	77.4	(3.5)	79.5	(2.8)	71.9	(2.5)
Education										
< High School (0-11)	17.2	(1.5)	14.3	(4.4)	13.9	(3.3)	17.2	(2.3)	19.4	(2.2)
High School (12)	29.5	(2.2)	32.4	(4.3)	22.5	(4.0)	31.2	(3.7)	30.5	(2.7)
Some College (13-15)	29.8	(1.8)	32.9	(3.9)	30.6	(3.1)	28.3	(2.6)	29.6	(2.7)
College (16+)	23.6	(2.1)	20.4	(3.9)	33.0	(3.2)	23.2	(3.2)	20.5	(2.3)
Marital Status										
Never married	26.8	(1.5)	22.8	(4.9)	26.0	(3.2)	27.5	(2.2)	27.8	(2.1)
Previously married	22.9	(1.2)	19.5	(4.1)	22.4	(3.1)	21.6	(2.0)	25.1	(2.5)
Married/cohabiting	50.3	(1.6)	57.6	(6.8)	51.6	(3.0)	50.9	(2.6)	47.1	(3.1)
Employment										
Student	2.7	(0.6)	5.2	(2.5)	3.8	(1.5)	2.5	(1.0)	1.7	(0.7)
Homemaker	5.7	(0.8)	1.1	(0.8)	5.0	(1.4)	6.2	(1.3)	6.8	(1.8)
Retired	7.2	(1.0)	12.4	(3.6)	11.8	(2.9)	7.2	(1.5)	3.8	(1.1)
Other	15.2	(1.2)	13.5	(3.5)	10.1	(2.9)	14.8	(1.7)	18.2	(2.7)
Working	69.2	(1.4)	67.9	(5.4)	69.3	(2.6)	69.3	(2.4)	69.5	(2.7)
Income ¹										
Low	23.5	(1.8)	19.6	(5.8)	19.6	(2.7)	20.1	(2.5)	28.9	(2.9)
Low-average	22.1	(1.6)	17.9	(3.6)	21.5	(2.7)	22.6	(2.9)	23.2	(2.4)
High-average	32.4	(1.5)	37.3	(5.9)	26.3	(3.1)	35.5	(3.0)	31.1	(3.0)
High	22.1	(1.8)	25.2	(4.5)	32.5	(3.6)	21.8	(3.0)	16.8	(2.0)
(n)	(1143)		(118)		(213)		(354)		(458)	

¹Assessed in the Part II sample (n = 5692).

Appendix Table 5b. SOCIO-DEMOGRAPHICS II: Associations (OR)¹ of Socio-Demographic Variables with Lifetime Social Phobia (SO) and Four Mutually-Exclusive SO Subgroups

	All Lifetime Social Phobia		All Lifetime Social Phobia								Pooled χ^2_{3-12} (p-value)	
	OR	(95% CI)	with 1-4 fears	with 5-7 fears	with 8-10 fears	with 11+ fears	OR	(95% CI)	OR	(95% CI)		OR
Age												
18-29	1.9*	(1.4-2.6)	0.7	(0.3-1.8)	2.7*	(1.5-4.8)	1.8	(0.9-3.4)	2.6*	(1.4-4.7)		
30-44	2.2*	(1.6-3.1)	0.5	(0.2-1.2)	3.0*	(1.8-5.0)	2.4*	(1.2-4.8)	3.0*	(1.8-4.9)		
45-59	1.7*	(1.3-2.2)	0.9	(0.4-2.1)	1.6	(1.0-2.8)	1.7	(0.9-3.0)	2.4*	(1.3-4.3)		
60+	1.0	--	1.0	--	1.0	--	1.0	--	1.0	--		
χ^2_3 (p-value)	26.4**	(< 0.001)	3.1	(0.378)	22.4**	(< 0.001)	7.7	(0.052)	21.8**	(< 0.001)	110.0**	(< 0.001)
Sex												
Female	1.2	(1.0-1.3)	0.7*	(0.4-1.0)	1.0	(0.7-1.3)	0.9	(0.7-1.1)	1.9*	(1.4-2.4)		
Male	1.0	--	1.0	--	1.0	--	1.0	--	1.0	--		
χ^2_1 (p-value)	3.3	(0.069)	3.9**	(0.048)	0.0	(0.878)	1.0	(0.315)	25.0**	(< 0.001)	34.4**	(< 0.001)
Race-ethnicity												
Hispanic	0.5*	(0.4-0.8)	0.9	(0.4-2.0)	0.5*	(0.2-0.9)	0.5*	(0.2-0.9)	0.6*	(0.4-0.8)		
Non-Hispanic Black	0.7*	(0.5-0.9)	1.0	(0.5-2.0)	0.8	(0.5-1.4)	0.4*	(0.3-0.6)	0.7	(0.5-1.1)		
Other	1.2	(0.9-1.7)	2.7*	(1.1-6.6)	1.0	(0.5-1.9)	1.0	(0.7-1.5)	1.2	(0.7-2.0)		
Non-Hispanic White	1.0	--	1.0	--	1.0	--	1.0	--	1.0	--		
χ^2_3 (p-value)	21.7**	(< 0.001)	4.9	(0.178)	5.5	(0.141)	22.5**	(< 0.001)	9.9**	(0.020)	36.8**	(< 0.001)
Education												
< High School (0-11)	1.2	(0.9-1.5)	1.1	(0.4-3.1)	0.7	(0.4-1.4)	1.2	(0.8-1.8)	1.4	(0.9-2.2)		
High School (12)	0.9	(0.7-1.2)	1.5	(0.8-2.9)	0.5*	(0.3-0.9)	1.0	(0.7-1.4)	1.0	(0.8-1.4)		
Some College (13-15)	1.1	(0.9-1.4)	1.6	(0.9-2.7)	0.9	(0.6-1.2)	1.1	(0.8-1.5)	1.2	(0.9-1.7)		
College (16+)	1.0	--	1.0	--	1.0	--	1.0	--	1.0	--		
χ^2_3 (p-value)	4.5	(0.211)	3.5	(0.322)	7.3	(0.064)	1.7	(0.633)	4.0	(0.264)	18.7**	(0.028)
Marital Status												
Never married	1.2	(1.0-1.4)	0.9	(0.5-1.5)	1.0	(0.7-1.4)	1.4*	(1.0-2.0)	1.2	(0.8-1.6)		
Previously married	1.4*	(1.2-1.7)	1.1	(0.6-2.0)	1.3	(0.9-2.0)	1.4*	(1.1-1.9)	1.5*	(1.2-2.0)		
Married/cohabiting	1.0	--	1.0	--	1.0	--	1.0	--	1.0	--		
χ^2_2 (p-value)	14.7**	(0.001)	0.6	(0.750)	1.5	(0.462)	8.7**	(0.013)	12.1**	(0.002)	20.1**	(0.003)
Employment												
Student	0.7	(0.4-1.2)	1.4	(0.3-5.9)	1.0	(0.4-2.4)	0.7	(0.3-1.6)	0.4*	(0.2-1.0)		
Homemaker	1.0	(0.8-1.4)	0.2	(0.0-1.1)	1.1	(0.5-2.1)	1.4	(0.9-2.2)	1.0	(0.6-1.8)		
Retired	0.7	(0.5-1.1)	0.7	(0.3-1.8)	1.4	(0.8-2.4)	0.7	(0.3-1.6)	0.4*	(0.2-0.8)		
Other	1.6*	(1.3-1.9)	1.7	(0.9-3.4)	1.2	(0.6-2.4)	1.8*	(1.2-2.7)	1.5*	(1.1-2.1)		
Working	1.0	--	1.0	--	1.0	--	1.0	--	1.0	--		
χ^2_4 (p-value)	32.5**	(< 0.001)	6.9	(0.142)	2.0	(0.735)	12.4**	(0.015)	27.9**	(< 0.001)	70.1**	(< 0.001)
Income												
Low	1.1	(0.8-1.5)	0.9	(0.4-2.1)	0.8	(0.4-1.4)	1.0	(0.6-1.6)	1.6*	(1.1-2.2)		
Low-average	1.1	(0.9-1.4)	0.8	(0.4-1.5)	0.8	(0.5-1.3)	1.2	(0.8-1.7)	1.4	(1.0-2.1)		
High-average	1.1	(0.8-1.3)	1.1	(0.6-2.0)	0.6*	(0.4-0.9)	1.2	(0.8-1.7)	1.3	(0.9-1.8)		
High	1.0	--	1.0	--	1.0	--	1.0	--	1.0	--		
χ^2_3 (p-value)	0.8	(0.849)	1.5	(0.684)	6.0	(0.112)	1.3	(0.734)	6.5	(0.089)	18.0**	(0.035)
(n)	(1109)		(107)		(206)		(346)		(450)			

*Significant at the .05 level, two-sided test

**Significant difference between the four mutually-exclusive social phobia subgroups at the .05 level

¹The odds ratios (ORs) were estimated in multivariate logistic regression models controlling for age at interview, sex, and race-ethnicity. All ORs were estimated in the Part II sample (n = 5692).

Appendix Table 6a. Lifetime and 12-month Social Phobia-Specific Treatment¹ of Pure Social Phobia and Four Mutually Exclusive Social Phobia Subgroups

	All Pure Social Phobia	Pure Social Phobia				χ^2_3
	% (se)	with 1-4 fears % (se)	with 5-7 fears % (se)	with 8-10 fears % (se)	with 11+ fears % (se)	
I. Lifetime Treatment ² (n)	16.2 (2.7) (213)	25.9 (6.1) (44)	16.6 (4.4) (56)	14.3 (4.4) (69)	8.4 (3.7) (44)	172.8*
II. 12-month Treatment ³ (n)	7.6 (1.6) (197)	15.9 (6.0) (30)	7.4 (3.9) (43)	4.4 (2.2) (72)	7.2 (3.1) (52)	51.0*

*Significant difference between the four mutually exclusive social phobia subgroups at the .05 level.

¹Refers to treatment obtained specifically for social phobia in any setting.

²Estimated among respondents with lifetime social phobia who did not qualify for any other lifetime DSM-IV disorder.

³Estimated among respondents with 12-month social phobia who did not qualify for any other 12-month DSM-IV disorder.

Figure 1a. Age of Onset Among People with Lifetime Social Phobia who had Avoidance, by Number of Fears

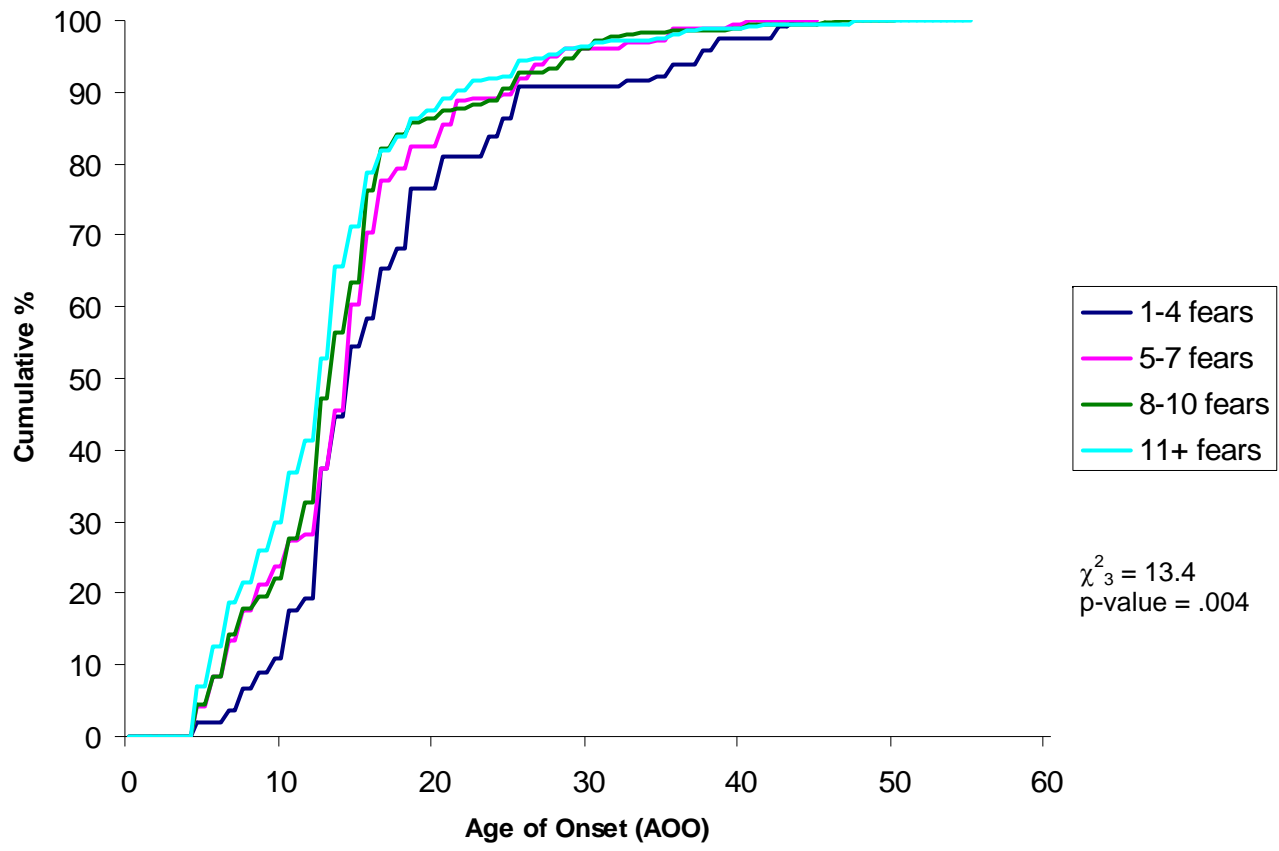


Figure 1b. Speed of Recovery Among People with Lifetime Social Phobia, by Number of Fears

